

ROCKWELL AND JOHNSON ELEMENTARY SCHOOL PROJECTS

BUILDING COMMITTEE UPDATE



AGENDA

Project Update

- SD Report Comments from Town

Site/ Civil Update

- Johnson Site Plan – revisions
- Rockwell Alternate scheme

Rizzo Introduction and CM Update

Budget/ Estimate Update

Invoice approvals

**PERKINS —
EASTMAN**

PROJECT UPDATE

Design Development Documentation

- Consultant Coordination

Programming Meetings

- Security/ IT/ AV

- Food Service

- Building Suites

Meeting with Rizzo Team

Schematic Design Review with OSCG&R

**PERKINS —
EASTMAN**

SITE/CIVIL UPDATE

Environmental Update

Geotechnical Reports - Complete

Survey - Complete

Earthwork Analysis

Traffic Study

Regulatory Schedule

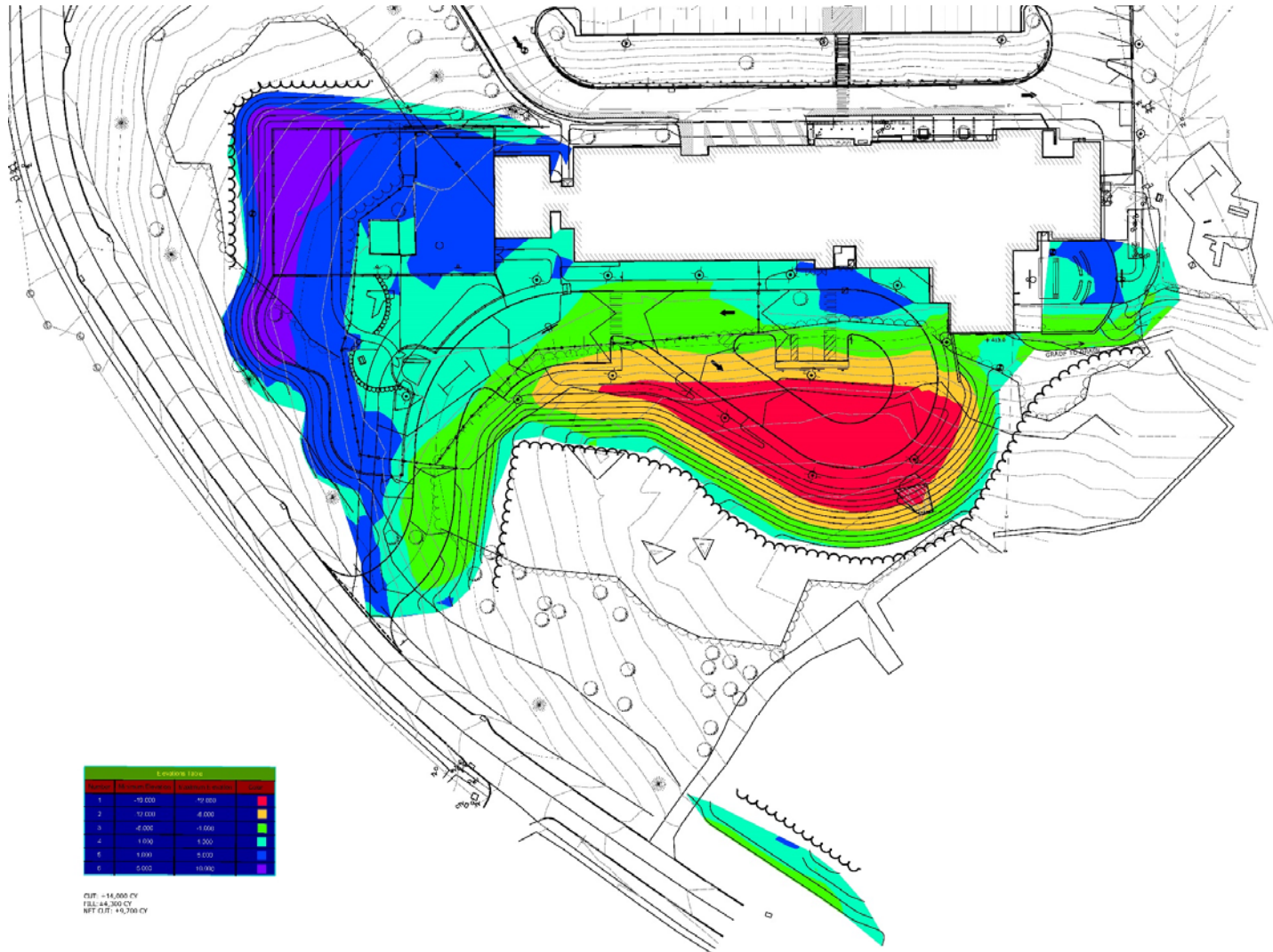
Site Plan Updates

**PERKINS —
EASTMAN**

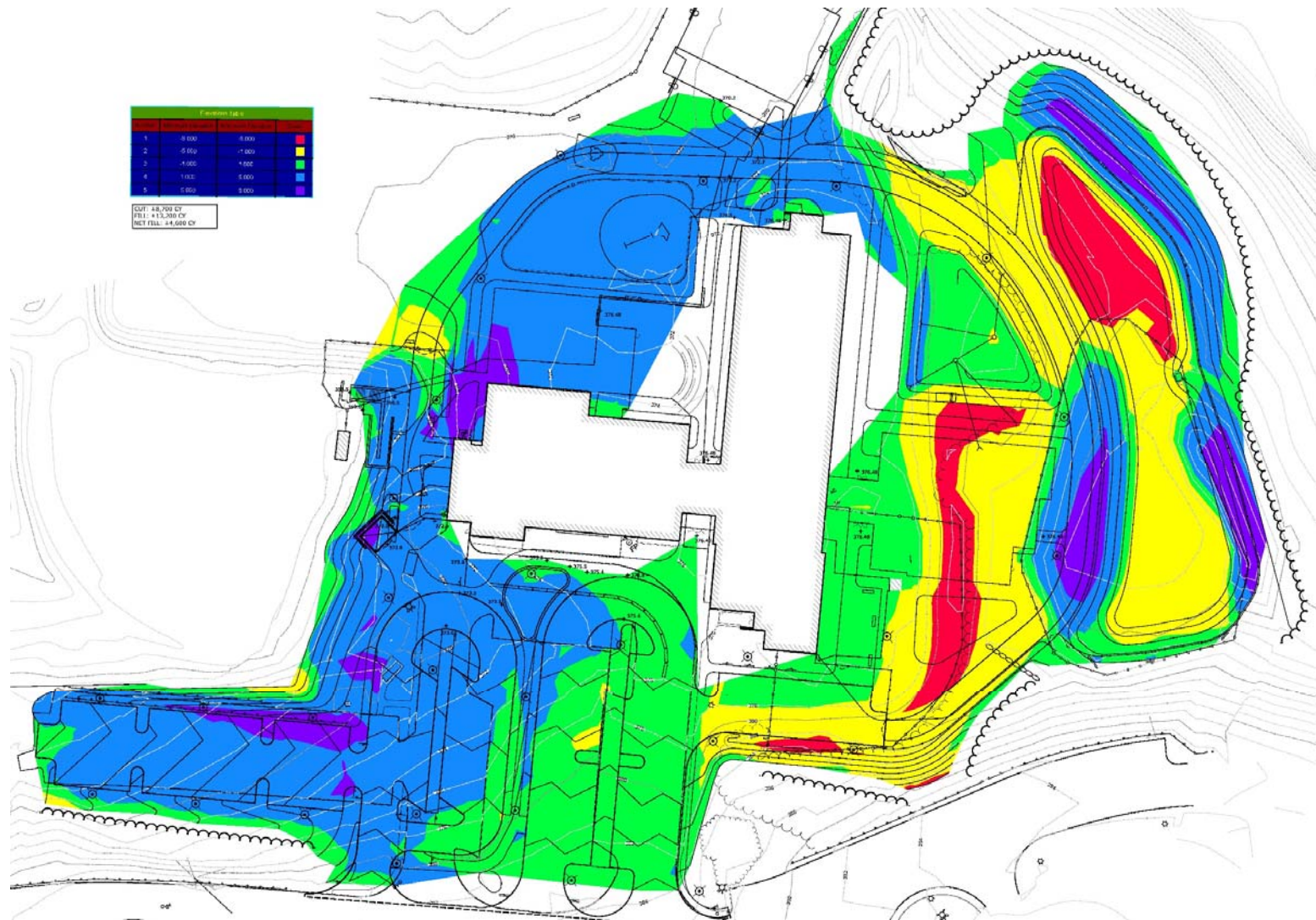
EARTHWORK ANALYSIS

**PERKINS —
EASTMAN**

ROCKWELL SCHOOL Earthwork Analysis



JOHNSON SCHOOL Earthwork Analysis



JOHNSON – SITE PLAN

**PERKINS —
EASTMAN**

JOHNSON SCHOOL Site Plan



ROCKWELL – SITE PLAN

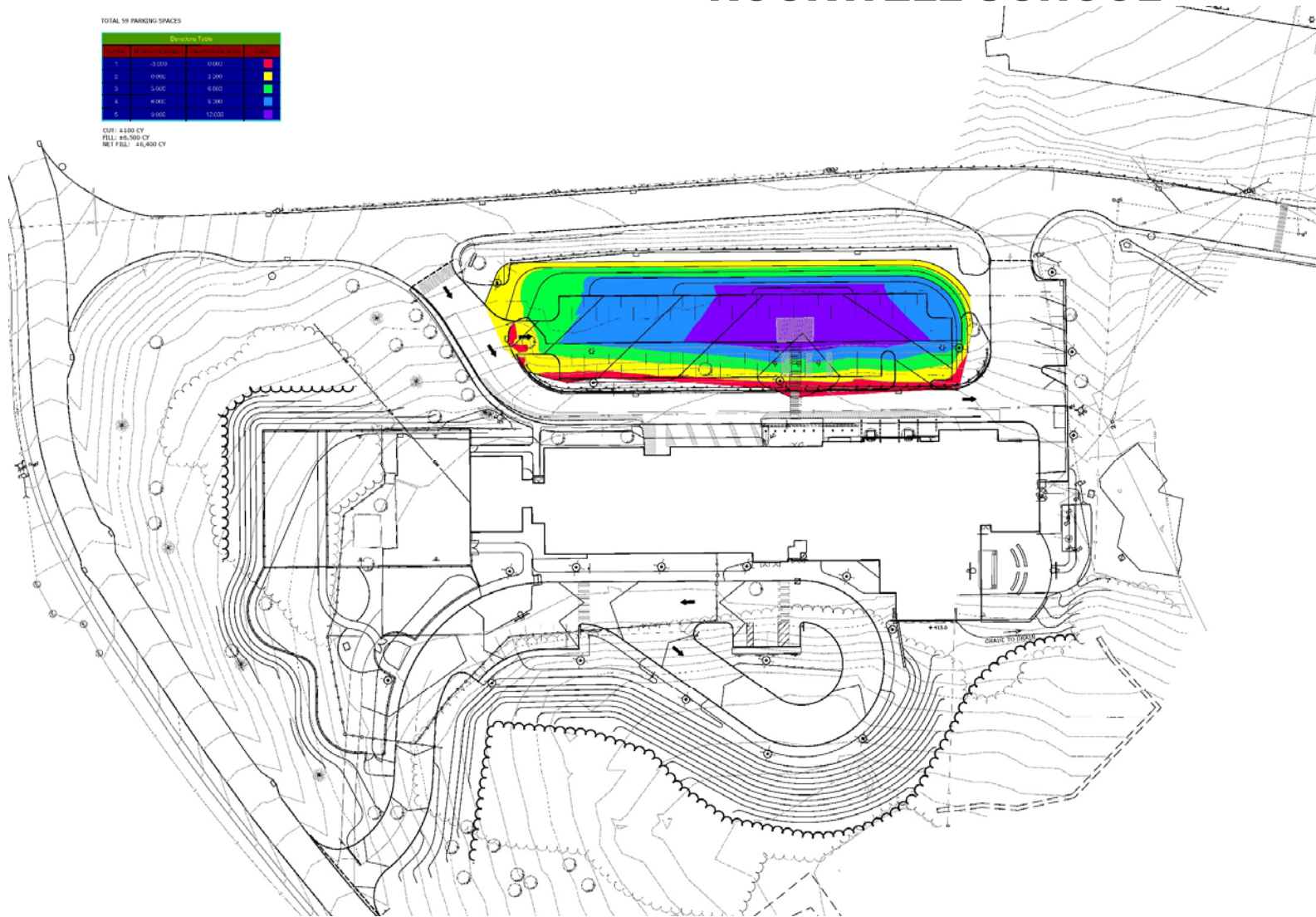
**PERKINS —
EASTMAN**

ROCKWELL SCHOOL Site Plan

TOTAL 59 PARKING SPACES

Distance Table	
1	0-100
2	100-200
3	200-300
4	300-400
5	400-500

CUH: 4,100 CY
FILL: 46,500 CY
NET FILL: 42,400 CY



RIZZO CORP. - CM UPDATE

Schedule

Construction Phasing

Safety during construction

SD Cost Estimate Progress

**PERKINS —
EASTMAN**

BUDGET - ESTIMATE UPDATE

**PERKINS —
EASTMAN**

NEXT STEPS:

SD Estimate Reconciliation by 4/17

Discuss Special BC Meeting: 4/17?

DD submission due 4/27

Selection of Commissioning Agent and
OPM

Regulatory Meetings

THANK YOU!

**PERKINS —
EASTMAN**